

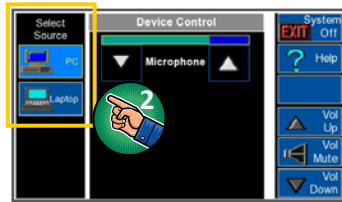


START

Getting Started



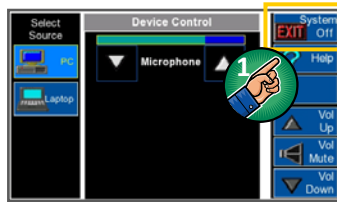
1. Touch the AMX screen



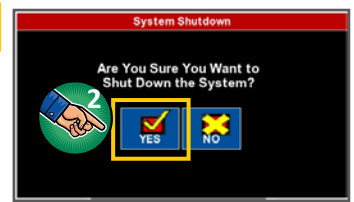
2. Select an input source
(Allow 30 seconds for projector to turn on)

EXIT

Shutting Down



1. Touch "System Off" button



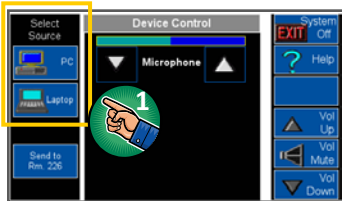
2. Select "Yes"

(This powers down the projector(s) and sets the touchpanel(s) back to the default "UCI" screen)

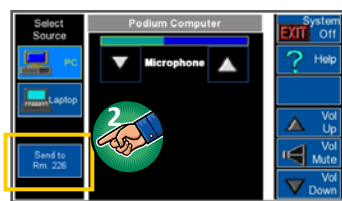


Sending Images & Audio to Both Rooms

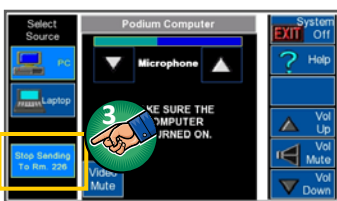
Use the **MSTB 210** instructor station when using the spaces as one large room. This touchpanel can send the same images and audio to rooms 210 and 226, while locking out & muting the room 226 inputs.



1. Select an input source



2. Touch "Send to Rm. 226"
(Allow 1 minute for projector to turn on & switch images)



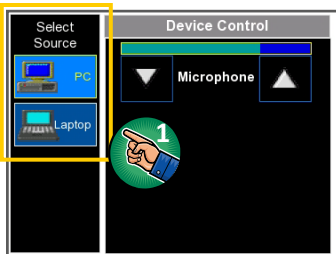
3. Touch "Stop Sending to Rm. 226" when finished



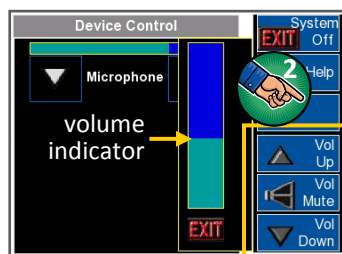
Room 226:
touchpanel locked out & gooseneck mic muted



Volume Controls (PC / Laptop)



1. Select an input source



2. Adjust volume

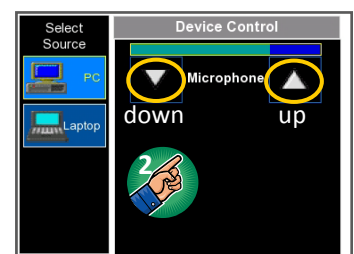
(You will only hear audio from the source selected)



Volume Controls (Microphone)



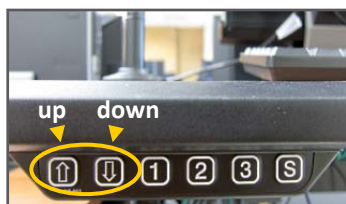
1. Turn on



2. Adjust volume



Table Height Adjustment



Height controls are located on the front of the instructor workstation. Use "up" and "down" arrows to adjust.



Information

For Questions and Assistance:

Please call **x48833**

Before Leaving, Please:

Log off of the computer (do not power off the PC)

Take all personal belongings with you, including computer accessories and media